

# Mutina

# Phenomenon

by Tokujin Yoshioka



IT

Rain Mosaics  
Mosaics: Honeycomb,  
Rock, Air, Wind

Informazioni generali  
Consigli di posa e manutenzione  
Colori  
Specifiche tecniche  
Imballo

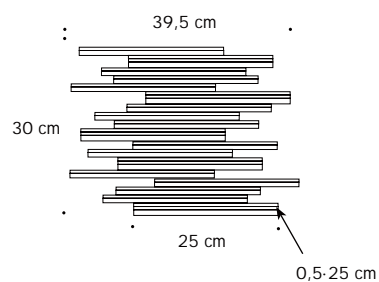


# Phenomenon Rain

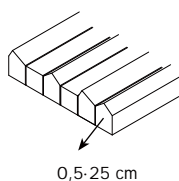
## Informazioni generali

collezione	Phenomenon
design	Tokujin Yoshioka, 2010 – 2013
produzione	Artigianale
materiale	Bacchette di gres porcellanato non smaltate ad impasto omogeneo, pressate singolarmente e montate su rete.
spessore	RAIN A: min 5 mm - max 7 mm RAIN B: min 5 mm - max 7 mm RAIN C: 5 mm
formato nominale	RAIN A: net 25-30 cm (net 9 7/8" - 12") RAIN B: net 25-30 cm (net 9 7/8" - 12") RAIN C: net 25-30 cm (net 9 7/8" - 12")
specifiche	<ul style="list-style-type: none"><li>- 4 colori Bianco, Grigio, Fango, Nero</li><li>- 3 mosaici su rete</li></ul> <p>- Il mosaico è assemblato in fogli per dare un "aspetto fatto a mano" alla superficie. Rain A-B-C, Honeycomb A-B, Rock, Air e Wind della serie Phenomenon rappresentano il meglio dell'artigianato italiano moderno.</p> <p>- Ogni tessera viene pressata individualmente con uno stampo su misura a 100 fori, creato espressamente per ottenere una sensazione materica e artigianale, poi cotto attraverso un processo brevettato.</p> <p>- Processo e macchine di produzione brevettati da Mutina (brevetto industriale depositato il 02/09/2010 con il numero MO2010A000247).</p> <p>- Le tessere sono assemblate manualmente e accuratamente da mani esperte per creare un modello unico e innovativo.</p>
premi	ICFF Editors Award Material 2011, Wallpaper Design Award 2011, Edida 2011, Selected for Adi Design Index 2011, Love Tag Azure Magazine 2012, Red Dot Design Award 2012, Interior Innovation Award 2014, Best of Best 2014
brevetti	Modello depositato n° 001912999-0011 – data di deposito: 06/09/2011
categoria	UNI EN 14411 App G (BIA group) UGL

RAIN A

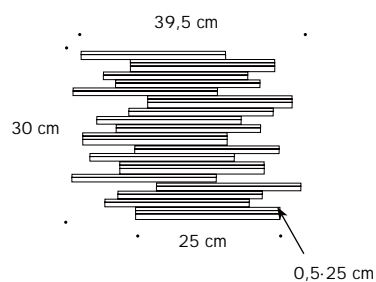


sezione

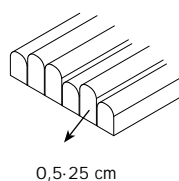


rete 25-30 cm

RAIN B

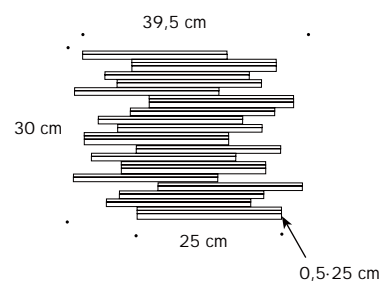


sezione

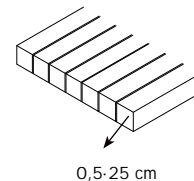


rete 25-30 cm

RAIN C



sezione



rete 25-30 cm

# Colori

## RAIN A



Rain A Bianco



Rain A Grigio



Rain A Fango



Rain A Nero

## RAIN B



Rain B Bianco



Rain B Grigio



Rain B Fango



Rain B Nero

## RAIN C



Rain C Bianco



Rain C Grigio



Rain C Fango



Rain C Nero

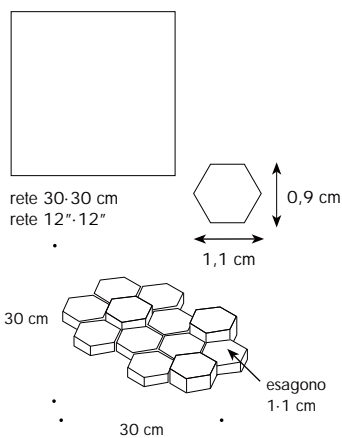
Per informazioni sulle fughe disponibili, contattare l'ufficio commerciale



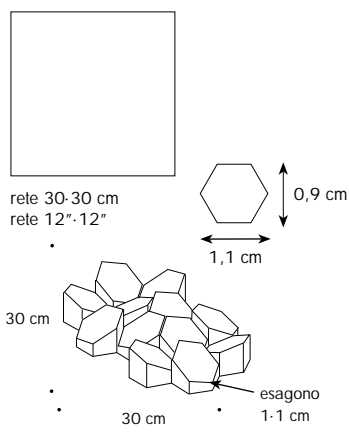
# Mosaics: Honeycomb, Rock, Air, Wind

collezione	Phenomenon
design	Tokujin Yoshioka, 2010 - 2013
produzione	Artigianale
materiale	Tessere di gres porcellanato non smaltate ad impasto omogeneo, pressate singolarmente e montate su rete.
spessore	HONEYCOMB A: min 5 mm - max 6 mm HONEYCOMB B: min 6 mm - max 8 mm ROCK: 5 mm AIR: 8 mm WIND: 7 mm
formato nominale	HONEYCOMB A: rete 30-30 cm (rete 12"-12") HONEYCOMB B: rete 30-30 cm (rete 12"-12") ROCK: rete 29-29 cm (rete 11 <sup>13</sup> / <sub>16</sub> "-11 <sup>13</sup> / <sub>16</sub> ") AIR: rete 30-30 cm (rete 12"-12") WIND: rete 25-25 cm (rete 10"-10")
specifiche	<ul style="list-style-type: none"> <li>- 4 colori Bianco, Grigio, Fango, Nero</li> <li>- 5 mosaici su rete</li> </ul> <p>- Il mosaico è assemblato in fogli per dare un "aspetto fatto a mano" alla superficie. Rain A-B-C, Honeycomb A-B, Rock, Air, e Wind della serie Phenomenon rappresentano il meglio dell'artigianato italiano moderno.</p> <p>- Ogni tessera viene pressata individualmente con uno stampo su misura a 100 fori, creato espressamente per ottenere una sensazione materica e artigianale, poi cotto attraverso un processo brevettato.</p> <p>- Processo e macchine di produzione brevettati da Mutina (brevetto industriale depositato il 02/09/2010 con il numero MO2010A000247).</p> <p>- Le tessere sono assemblate manualmente e accuratamente da mani esperte per creare un modello unico e innovativo.</p>
premi	ICFF Editors Award Material 2011, Wallpaper Design Award 2011, Edida 2011, Selected for Adi Design Index 2011, Love Tag Azure Magazine 2012, Red Dot Design Award 2012, Interior Innovation Award 2014, Best of Best 2014
brevetti	Modello depositato n° 001912999-0011 - data di deposito: 06/09/2011 Modello depositato n° 002336909-0001/0004 - data di deposito: 31/10/2013
categoria	UNI EN 14411 App G (BIA group) UGL

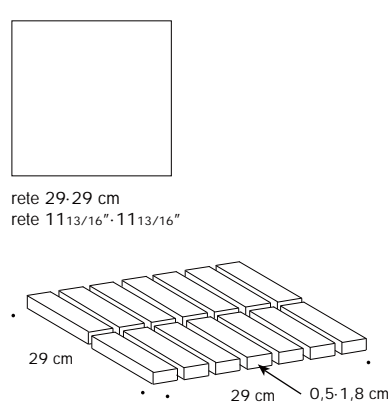
HONEYCOMB A



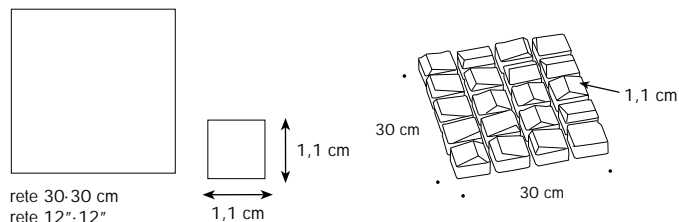
HONEYCOMB B



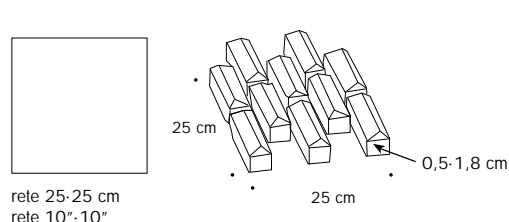
ROCK



AIR



WIND

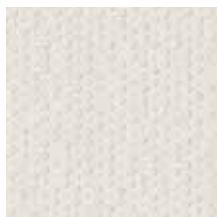


## Consigli di posa e manutenzione

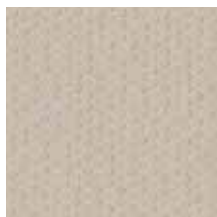
destinazione d'uso	Pavimento (ROCK, HONEY A), rivestimento (ROCK, HONEY A, WIND, AIR, HONEY B, RAIN A-B-C) – interno, esterno.
consigli di posa	Posare su superfici perfettamente planari e asciutte.
collante consigliato	Colla per gres NON RAPIDA per facilitare la sistemazione dei fogli.
fuga consigliata	2 mm. Utilizzare i cunei distanziatori per correggere le differenze di calibro tra le piastrelle.
stucco consigliato	STUCCO CEMENTIZIO: (tutti i mosaici). Stuccare 0,5 mq per volta e lavare bene con acqua pulita. Rimuovere bene i residui di stucco prima che essicchi completamente. STUCCO EPOSSIDICO: (solo rock, honey A). Stuccare 0,5 mq per volta e lavare bene con acqua pulita. Rimuovere bene i residui di stucco prima che essicchi completamente.
consigli di pulizia fine cantiere	STUCCO CEMENTIZIO: Acido tamponato (es. DETERDEK PRO di FILA, o similari). Bagnare il pavimento con acqua, diluire il prodotto 1:5 con acqua e versare sul pavimento. Aspettare 2 o 3 minuti poi utilizzare scotch brite bianco e risciacquare bene con acqua pulita. STUCCO EPOSSIDICO: Detergente alcalino (es. FILA CR10 o similari). FILA CR10: da applicare puro, lasciare agire circa 30 minuti e utilizzare lo scotch brite verde. SILICONE: Solvente per silicone (es. FILA ZERO SIL) da versare puro direttamente sulla macchia, attendere 20 minuti e sempre con l'utilizzo di scotch brite rimuovere l'alone. PITTURA: Di solito si toglie con acqua, ma se sono state utilizzate delle pitture in resina o smalti particolari, meglio chiedere alla ditta produttrice del colore quale sia il solvente più adatto. RUGGINE: Smacchiatore rimuovi ruggine (es. FILA NO RUST.) Applicare il prodotto sulla macchia, lasciare agire 15 minuti circa, asportare il residuo e sciacquare accuratamente.
pulizia generale (piastrelle posate)	Consigliamo l'utilizzo di un detergente neutro diluito in acqua. Evitare l'uso di prodotti acidi o alcalini, cere e/o impregnanti. Durante la pulizia ordinaria si consiglia di utilizzare il meno possibile quanto di più abrasivo (come pagliette e spugne di ferro o acciaio). Questa raccomandazione deve essere rispettata rigorosamente nel caso di piastrelle con una finitura superficiale lucida poiché sono più suscettibili al rischio di graffi, perdita di lucentezza, ecc. In caso di sporco pesante o superfici particolarmente ruvide, utilizzare un detergente alcalino e risciacquare dopo il lavaggio. Per grandi superfici si consiglia l'uso di una macchina lavapavimenti. Durante le procedure di pulizia quotidiane, è necessario ricordare che alcuni tipi di sporco (polvere, sabbia) aumentano l'effetto abrasivo del traffico pedonale. Pertanto si consiglia di posizionare un tappetino all'ingresso.
calibro (misura reale)	-

# Colori

## HONEYCOMB A



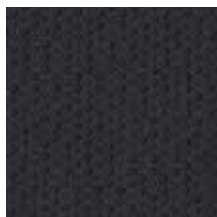
Honeycomb A Bianco



Honeycomb A Grigio

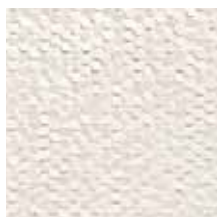


Honeycomb A Fango



Honeycomb A Nero

## HONEYCOMB B



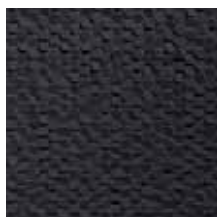
Honeycomb B Bianco



Honeycomb B Grigio

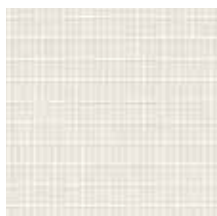


Honeycomb B Fango

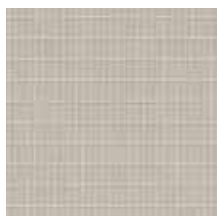


Honeycomb B Nero

## ROCK



Rock Bianco



Rock Grigio



Rock Fango



Rock Nero

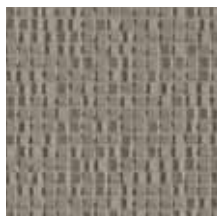
## AIR



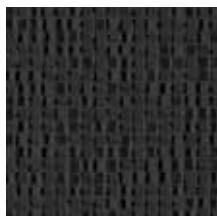
Air Bianco



Air Grigio



Air Fango



Air Nero

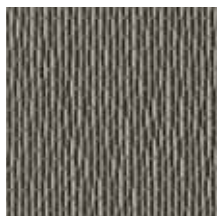
## WIND



Wind Bianco



Wind Grigio



Wind Fango



Wind Nero

Per informazioni sulle fughe disponibili, contattare l'ufficio commerciale

## Specifiche tecniche

NORMA	CARATTERISTICHE	VALORE PRESCRITTO	PHENOMENON
ISO 10545/3	assorbimento d'acqua	< 0,5%	0,1%
ISO 10545/9	resistenza agli sbalzi termici	nessuna alterazione visibile	resiste
ISO 10545/12	resistenza al gelo	nessuna alterazione visibile	resiste
ISO 10545/13	resistenza agli attacchi chimici	minimo B	A
ISO 10545/14	resistenza alle macchie	minimo 3	5
VOC Emission			disponibile su richiesta
Declaration of Contents			disponibile su richiesta
EPD			disponibile su richiesta
SDS			disponibile su richiesta
BPD3			disponibile su richiesta
HPD			disponibile su richiesta

## Imballo

FORMATO	PZ-MQ	PZ-SCAT	MQ-SCAT	SCAT-PAL	KG-SCAT	KG-PAL	MQ-PAL
rain A rete 25-30 cm	13,34	5	0,375	60	4,55	273,00	22,50
rain B rete 25-30 cm	13,34	5	0,375	60	4,55	273,00	22,50
rain C rete 25-30 cm	13,34	5	0,375	60	4,55	273,00	22,50
honeycomb A rete 30-30 cm	11,11	8	0,72	42	7,50	315,00	30,24
honeycomb B rete 30-30 cm	11,11	8	0,72	42	8,55	315,00	30,24
rock rete 29-29 cm	11,90	11	0,92	42	8,10	340,00	38,64
air rete 30-30 cm	11,11	11	0,99	42	10,10	424,00	41,58
wind rete 25-25 cm	16,00	8	0,50	60	5,60	336,00	30,00
raccordo esterno honeycomb A+B 9,4-7,6-7,3 cm	86 ml	26	0,30	-	0,05	-	-



# Mutina

# Phenomenon

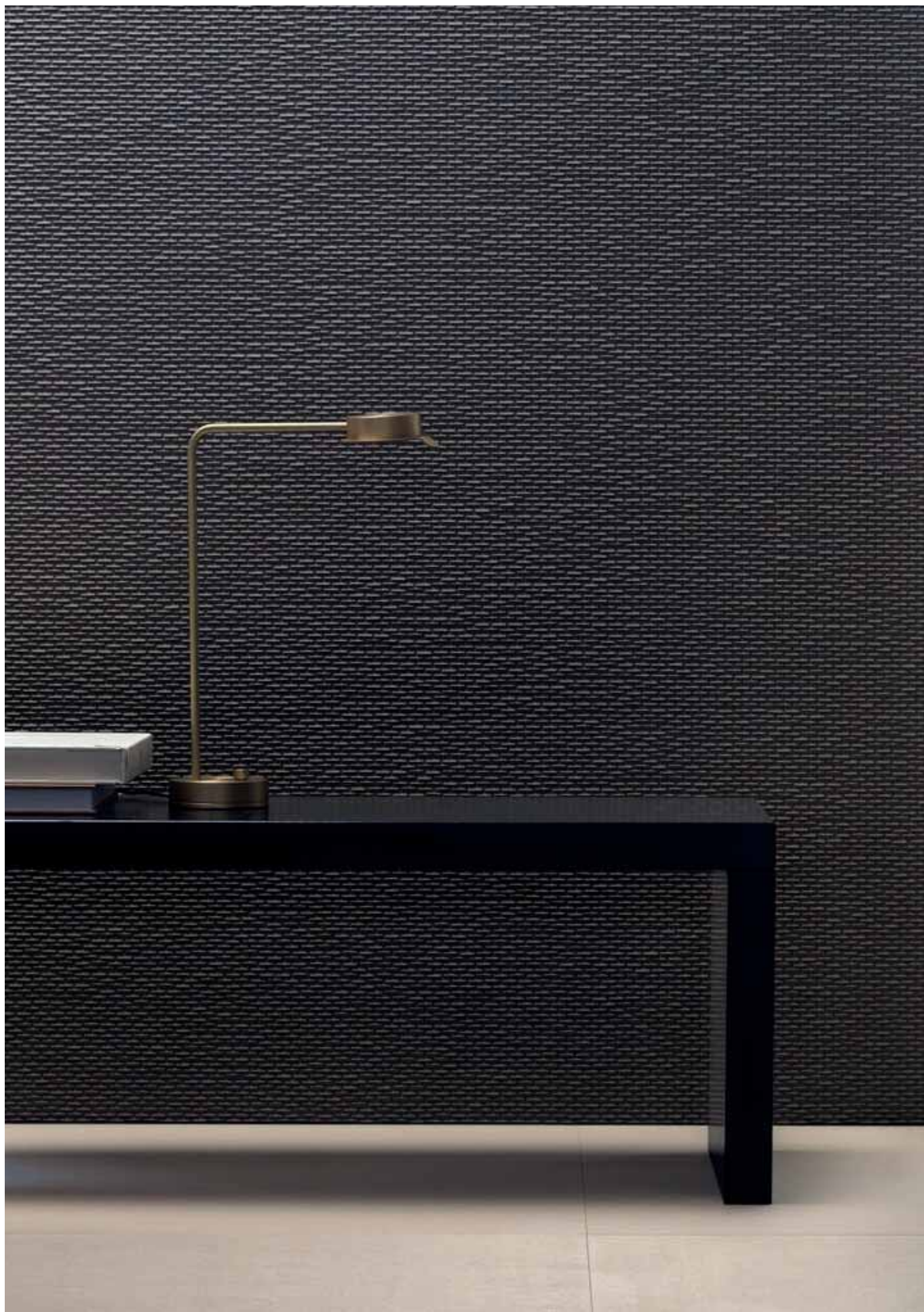
by Tokujin Yoshioka



EN

Rain Mosaics  
Mosaics: Honeycomb,  
Rock, Air, Wind

General information  
Laying and maintenance tips  
Colors  
Technical features  
Packing

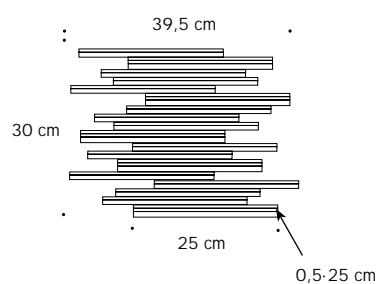


# Phenomenon Rain

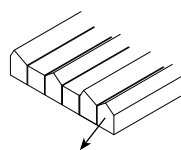
## General information

collection	Phenomenon
design	Tokujin Yoshioka, 2010 – 2013
production	Artisanal
material	Homogeneous unglazed porcelain stoneware straws, obtained by pressing and fixed on net
thickness	RAIN A: min 5 mm - max 7 mm RAIN B: min 5 mm - max 7 mm RAIN C: 5 mm
nominal sizes	RAIN A: net 25-30 cm (net 9 7/8" - 12") RAIN B: net 25-30 cm (net 9 7/8" - 12") RAIN C: net 25-30 cm (net 9 7/8" - 12")
specification	<ul style="list-style-type: none"><li>- 4 colors Bianco, Grigio, Fango, Nero</li><li>- 3 mosaic card shapes on net</li><li>- The mosaic is assembled in sheets to give a "handmade look" to the surface. Rain A-B-C, Honeycomb A-B, Rock, Air, Wind, of the series Phenomenon represent the finest of modern-day Italian craftsmanship.</li><li>- Each mosaic card is individually pressed with a bespoke 100-holes mould, expressly created to achieve a materic and artisanal feeling, then fired through a bespoke, patented, process.</li><li>- Mutina patented production process and machines (Industrial Patent filed on 02/09/2010 under number MO2010A000247)</li><li>- The cards are manually assembled accurately by expert hands to build a unique, innovative pattern.</li></ul>
awards	ICFF Editors Award Material 2011, Wallpaper Design Award 2011, Edida 2011, Selected for Adi Design Index 2011, Love Tag Azure Magazine 2012, Red Dot Design Award 2012, Interior Innovation Award 2014, Best of Best 2014
patents	Registered design n° 001912999-0011 – date of registration: 06/09/2011
category	UNI EN 14411 App G (BIA group) UGL

RAIN A



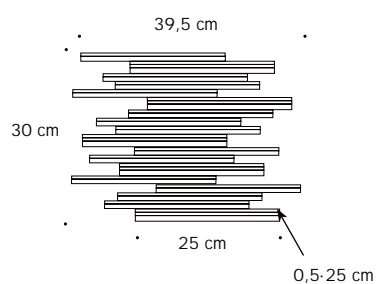
section



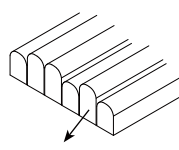
0,5-25 cm

net 25-30 cm  
net 9 7/8" - 12"

RAIN B



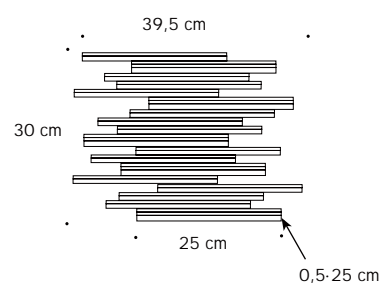
section



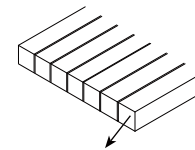
0,5-25 cm

net 25-30 cm  
net 9 7/8" - 12"

RAIN C



section



0,5-25 cm

net 25-30 cm  
net 9 7/8" - 12"

# Colors

## RAIN A



Rain A Bianco



Rain A Grigio



Rain A Fango



Rain A Nero

## RAIN B



Rain B Bianco



Rain B Grigio



Rain B Fango



Rain B Nero

## RAIN C



Rain C Bianco



Rain C Grigio



Rain C Fango



Rain C Nero

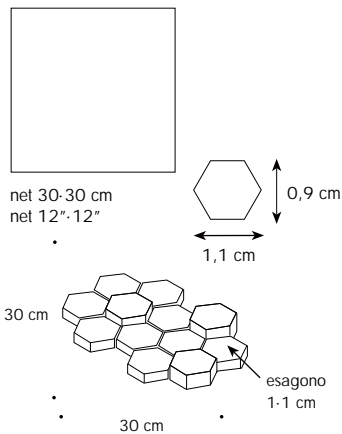
For information about the available grouts, please contact the sales department.



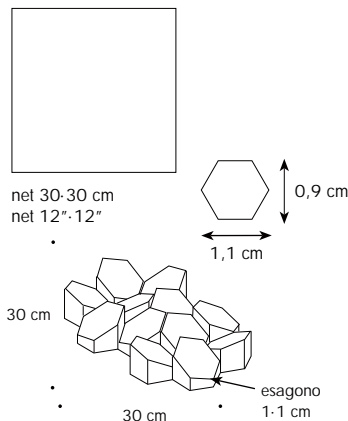
# Mosaics: Honeycomb, Rock, Air, Wind

collection	Phenomenon
design	Tokujin Yoshioka, 2010 - 2013
production	Artisanal
material	Homogeneous unglazed porcelain stoneware tesserae, obtained by pressing and fixed on net
thickness	HONEYCOMB A: min 5 mm - max 6 mm HONEYCOMB B: min 6 mm - max 8 mm ROCK: 5 mm AIR: 8 mm WIND: 7 mm
nominal sizes	HONEYCOMB A: net 30-30 cm (net 12"-12") HONEYCOMB B: net 30-30 cm (net 12"-12") ROCK: net 29-29 cm (net 11 13/16"-11 13/16") AIR: net 30-30 cm (net 12"-12") WIND: net 25-25 cm (net 10"-10")
specification	<ul style="list-style-type: none"> <li>- 4 colors Bianco, Grigio, Fango, Nero</li> <li>- 5 mosaic card shapes on net</li> <li>- The mosaic is assembled in sheets to give a "handmade look" to the surface. Rain A-B-C, Honeycomb A-B, Rock, Air, Wind, of the series Phenomenon represent the finest of modern-day Italian craftsmanship.</li> <li>- Each mosaic card is individually pressed with a bespoke 100-holes mould, expressly created to achieve a materic and artisanal feeling, then fired through a bespoke, patented, process.</li> <li>- Mutina patented production process and machines (Industrial Patent filed on 02/09/2010 under number MO2010A000247)</li> <li>- The cards are manually assembled accurately by expert hands to build a unique, innovative pattern.</li> </ul>
awards	ICFF Editors Award Material 2011, Wallpaper Design Award 2011, Edida 2011, Selected for Adi Design Index 2011, Love Tag Azure Magazine 2012, Red Dot Design Award 2012, Interior Innovation Award 2014, Best of Best 2014
patents	Registered design n° 001912999-0011 – date of registration: 06/09/2011 Registered design n° 002336909-0001/0004 – date of registration: 31/10/2013
category	UNI EN 14411 App G (BIA group) UGL

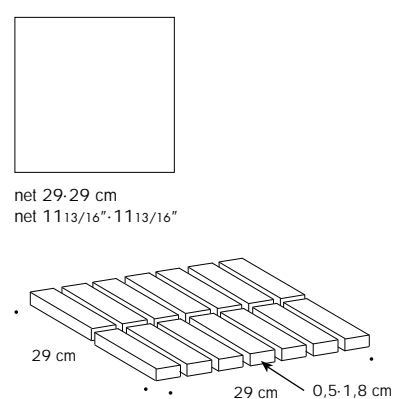
HONEYCOMB A



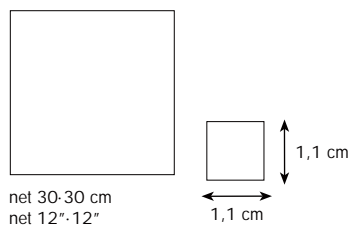
HONEYCOMB B



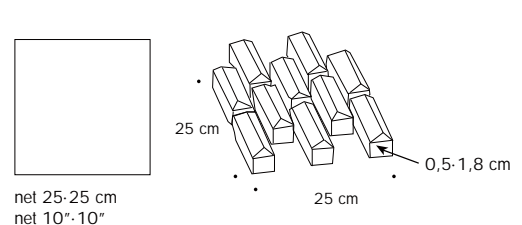
ROCK



AIR



WIND



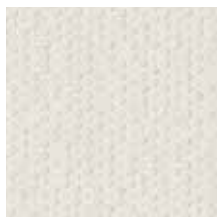
## Laying and maintenance tips

use	Floor (ROCK, HONEY A), wall (ROCK, HONEY A, WIND, AIR, HONEY B, RAIN A-B-C) – indoor, outdoor.
installation	Lay on perfectly flat, dry walls.
recommended adhesive	NON-RAPID-DRYING adhesive for porcelain stoneware to make it easier to fix the sheets.
recommended joints	2mm joints.
recommended fillers	CEMENT-BASED GROUT: (all mosaics). Grout 0.5 m <sup>2</sup> at a time and wash thoroughly with clean water. Remove all traces of grout carefully before it dries completely. EPOXY GROUT: (rock, honey A only). Grout 0.5 m <sup>2</sup> at a time and wash thoroughly with clean water. Remove all traces of grout carefully before it dries completely.
cleaning at the end of installation	CEMENT-BASED GROUT: Buffered acid (e.g. DETERDEK PRO by FILA, or similar). Wet the floor with water, dilute the product 1:5 with water and pour it on the floor. Wait for 2 or 3 minutes then use a white scotch brite pad and rinse well with clean water. EPOXY GROUT: Alkaline detergent (e.g. FILA CR10 by FILA). FILA CR10: apply pure, wait for 30 minutes then use a green scotch brite pad. SILICONE: Solvent for silicone (e.g. FILA ZERO SIL.). Pour it straight onto the stain, wait for 20 minutes and remove the mark using scotch brite. PAINT: Can usually be removed using water, but if resin-based paints or particular enamels have been used, it is best to ask the manufacturer which solvent is most suitable. RUST: stain remover es. FILA NO RUST. Apply the product onto the stain, leave for 15 minutes, remove the residue and rinse thoroughly.
general cleaning (installed tiles)	You are recommended to use ordinary neutral detergent diluted in water. Avoid using acid or alkaline products, waxes and/or impregnants. During ordinary cleaning it is recommended to use extremely abrasive items (such as scourers and iron or steel sponges) as little as possible. This recommendation must be adhered to rigorously in the case of tiles with a glossy surface finishing as they are more susceptible to the risk of scuffs, scratches and loss of shine, etc. In the event of heavy dirt or particularly textured surfaces, use an alkaline detergent and rinse after washing. For large surfaces, the use of a floor washing machine is recommended. During every-day cleaning procedures, it is necessary to remember that certain types of dirt (dust, sand) increase the abrasive effect of foot traffic. Therefore we recommend that you avoid bringing in this type of dirt, which comes in from the outside, by placing a door-mat at the entrance.
calibers (real size)	-

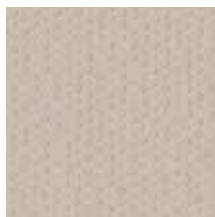


# Colors

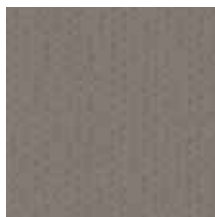
## HONEYCOMB A



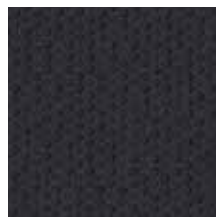
Honeycomb A Bianco



Honeycomb A Grigio

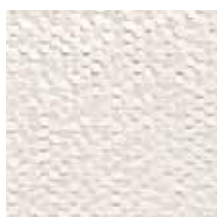


Honeycomb A Fango



Honeycomb A Nero

## HONEYCOMB B



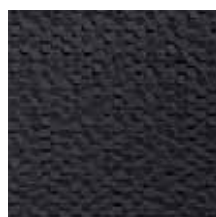
Honeycomb B Bianco



Honeycomb B Grigio



Honeycomb B Fango

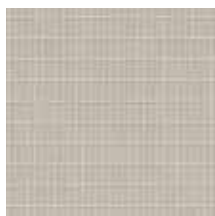


Honeycomb B Nero

## ROCK



Rock Bianco



Rock Grigio



Rock Fango



Rock Nero

## AIR



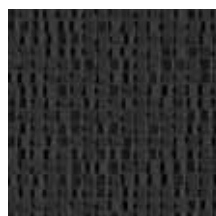
Air Bianco



Air Grigio



Air Fango



Air Nero

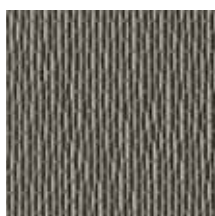
## WIND



Wind Bianco



Wind Grigio



Wind Fango



Wind Nero

For information about the available grouts, please contact the sales department.

## Technical features

STANDARD	FEATURES	VALUE REQUIRED	PHENOMENON
ISO 10545/3	water absorption	< 0,5%	0,1%
ISO 10545/9	resistance to thermal shock	no visible alteration	resistant
ISO 10545/12	frost resistance	no visible alteration	resistant
ISO 10545/13	resistance to chemical attacks	minimum B	A
ISO 10545/14	stains resistance	minimum 3	5
VOC Emission			available upon request
Declaration of Contents			available upon request
EPD			available upon request
SDS			available upon request
BPD3			available upon request
HPD			available upon request

## Packing

SIZE	PCS-SQM	PCS-BOX	SQM-BOX	BOX-PAL	KG-BOX	KG-PAL	SQM-PAL
rain A net 25-30 cm	13,34	5	0,375	60	4,55	273,00	22,50
rain B net 25-30 cm	13,34	5	0,375	60	4,55	273,00	22,50
rain C net 25-30 cm	13,34	5	0,375	60	4,55	273,00	22,50
honeycomb A net 30-30 cm	11,11	8	0,72	42	7,50	315,00	30,24
honeycomb B net 30-30 cm	11,11	8	0,72	42	8,55	315,00	30,24
rock net 29-29 cm	11,90	11	0,92	42	8,10	340,00	38,64
air net 30-30 cm	11,11	11	0,99	42	10,10	424,00	41,58
wind net 25-25 cm	16,00	8	0,50	60	5,60	336,00	30,00
raccordo esterno honeycomb A+B 9,4-7,6-7,3 cm	86 ml	26	0,30	-	0,05	-	-